



Simply Better Connections

Remote Terminal Operation

PE5 / PE6 / PE7 / PE8 / PE9 Series PDU
User Guide


Introduction

With ATEN PE5 / PE6 / PE7 / PE8 / PE9 Series eco PDUs you can log in remotely from a computer using Telnet. Telnet is a program that connects to a device over a network to provide text-based management and control. Telnet provides some of the same management features found in the eco PDU's web GUI. You can reference the eco PDU's web GUI functions by downloading the user manual from our website (www.aten.com). This can help you as you work your way through the text-based commands used to control the eco PDU that are discussed in this guide.

All PE Series eco PDUs including: PE5, PE6, PE7, PE8 and PE9 series provide the Telnet feature. If the eco PDU you are using doesn't work with Telnet, please download the latest firmware from our website.

Conventions

This manual uses the following conventions:

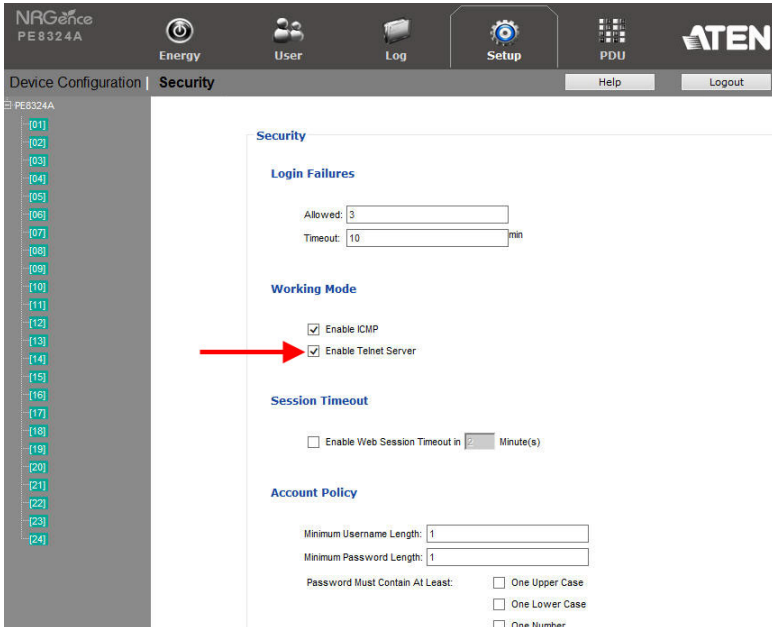
- | | |
|---|--|
| Monospaced | Indicates text that you should key in. |
| [] | Indicates keys you should press. For example, [Enter] means to press the Enter key. If keys need to be chorded, they appear together in the same bracket with a plus sign between them: [Ctrl+Alt]. |
| 1. | Numbered lists represent procedures with sequential steps. |
| ◆ | Bullet lists provide information, but do not involve sequential steps. |
| > | Indicates selecting the option (on a menu or dialog box, for example), that comes next. For example, Start > Run means to open the <i>Start</i> menu, and then select <i>Run</i> . |
|  | Indicates critical information. |

Telnet

Telnet is available on all PE5 / PE6 / PE7 / PE8 / PE9 Series eco PDUs installed with the latest firmware. You can log in to the eco PDU via Telnet from any computer connected to the same network.

Setup

First, log in to the eco PDU's web GUI, then select the **Setup** tab and click **Security** from the menu bar. Under **Working Mode**, check *Enable Telnet Server* and then click **Save** at the bottom of the page.

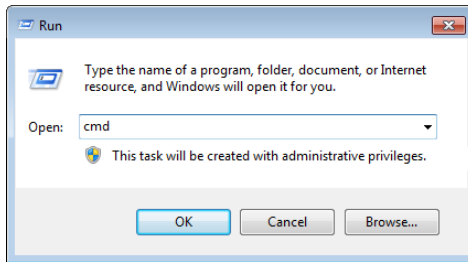


Note: If the *Enable Telnet Server* option is not available, please download the latest firmware from our website: www.aten.com.

Logging In

To log in to the eco PDU via Telnet, do the following:

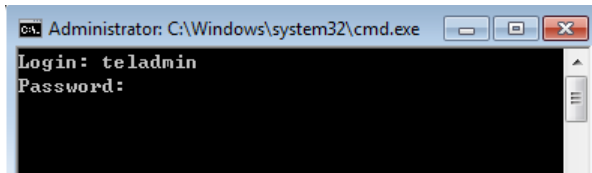
1. On your computer, open the start menu and select **Run**.
2. In the box type `cmd` and click **OK**.



3. At the command prompt, key in `telnet` and the IP Address of the PDU, as follows:

```
telnet [IP Address]
```

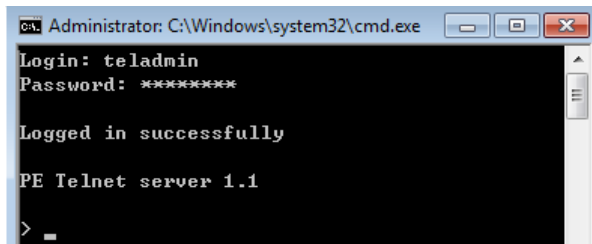
4. Press **Enter**. The login screen appears:



5. At the login prompt, enter the default username: `teladmin`; and password: `telpwd`.

Note: The Telnet username and password can be configured on the User tab of the eco PDU's web GUI.

6. When the Telnet session is established, *Logged in successfully* appears along with the command line prompt:



Telnet Commands

The text-based command line provides some of the same functions found under the Energy tab of the eco PDU's web-based GUI. The commands needed to view and configure the eco PDU are provide in the sections that follows. You can reference information provided in the user manual for the browser functions as you use the commands.

When you have finished with your session simply close the terminal (command line) window by clicking the **X** or use the *Close Telnet Session* command (see page 15). Telnet sessions are automatically disconnected if there's no activity for 60 seconds.

Use the Telnet text commands to view and configure the eco PDU as described in each section. The commands available for each type of eco PDU depend on the features included with each model. You can reference information about the eco PDU's features by downloading the user manual from our website: www.aten.com.

Verification

After sending an incorrect command, a verification message appears at the end of the command line.

- ◆ **Invalid command or exceed max command length** - the command has the wrong format and/or values. Try typing in the command string again using the correct format and/or values.

Read Outlet Status

The Read Outlet Status command allows you to view the power status of an outlet on the eco PDU.

The formula for Read Outlet Status commands is as follows:

Command + Outlet + Number + Return String + [Enter]

1. For example, if you want to read the status of outlet 01 with a simple return string, type the following:

```
read status o01 simple [Enter]
```

2. For example, if you want to read the status of outlet 12 with a format return string, type the following:

```
read status o12 format [Enter]
```

The following tables show the possible values for the Read Outlet Status commands:

Command	Description
read status	Read status command

Outlet	Description
o	Outlet command
xx	PDU Outlet number xx: Outlet on PDU Example: o02

Return String	Description
simple	Return simple string status
format	Return format string status

The following table lists the available Read Outlet Status commands:

Command	Outlet	Return String	Enter	Description
read status	oXX	simple	[Enter]	Read the status of outlet XX with a simple return string. XX: Outlet number
read status	oXX	format	[Enter]	Read the status of outlet XX with a format return string. XX: Outlet number

- Note:**
1. Each command string can be separated with a space.
 2. The **Return String** command string can be skipped and **format** will be used by default.
-

Switch Outlet Status

The Switch Outlet Status command allows you to change the power status of an outlet on the eco PDU.

The formula for Switch Outlet Status commands is as follows:

Command + Outlet + Number + Control + Option + [Enter]

1. For example, if you want to switch off outlet 04 immediately, type the following:

```
sw o04 off imme [Enter]
```

2. For example, if you want to switch on outlet 12 with the time delay set for the outlet, type the following:

```
sw o12 on delay [Enter]
```

3. For example, if you want to reboot outlet 08, type the following:

```
sw o08 reboot [Enter]
```

The following tables show the possible values for the Switch Outlet Status commands:

Command	Description
sw	Switch outlet status command

Outlet	Description
o	Outlet command
xx	PDU outlet number xx: Outlet on PDU Example: o02

Control	Description
on	Switch outlet on
off	Switch outlet off
reboot	Switch outlet off and then switch outlet on

Option	Description
imme	Switch outlet status immediately
delay	Switch outlet status with time delay set for the outlet

The following table lists the available Switch Outlet Status commands:

Command	Outlet	Control	Option	Enter	Description
sw	oXX	on	imme delay	[Enter]	Switch outlet XX on with option XX: Outlet number
sw	oXX	off	imme delay	[Enter]	Switch outlet XX off with option XX: Outlet number
sw	oXX	reboot		[Enter]	Read the status of outlet XX XX: Outlet number

-
- Note:** 1. Each command string can be separated with a space.
2. The **Option** command string can be skipped and **delay** will be used by default.
-

Read Power Value

The Read Power Value command allows you to view the power measurement values of the eco PDU, Bank or Outlet.

The formula for Read Power Value commands is as follows:

```
Command + Target + Number + Measurement + Return String
+ [Enter]
```

1. For example, if you want to read the voltage measurement of outlet 12 with a simple return string, type the following:

```
read meter olt o12 volt simple [Enter]
```
2. For example, if you want to read the power dissipation measurement of bank 02 with a format return string, type the following:

```
read meter bnk o02 pd format [Enter]
```
3. For example, if you want to read the voltage frequency measurement of the PDU with a simple return string, type the following:

```
read meter dev freq simple [Enter]
```

The following tables show the possible values for the Read Power Value commands:

Command	Description
read meter	Read power value command

Target	Description
dev	Get value from PDU
bnk	Get value from bank
olt	Get value from outlet

Number	Description
o	Target number command
xx	Bank or outlet number xx: Bank or Outlet on PDU Example: o02

Measurement	Description
curr	Read current measurement
volt	Read voltage measurement
pow	Read power measurement

Measurement	Description
pd	Read power dissipation measurement
freq	Read voltage frequency measurement

Return String	Description
simple	Return simple string measurement
format	Return format string measurement

The following table lists the available Read Power Value commands:

Command	Target	Number	Measurement	Return String	Enter	Description
read meter	dev		curr volt pow pd freq	simple format	[Enter]	Read PDU measurement with return string
read meter	bnk	oXX	curr volt pow pd freq	simple format	[Enter]	Read bank XX measurement with return string XX: Bank number
read meter	olt	oXX	curr volt pow pd freq	simple format	[Enter]	Read outlet XX measurement with return string XX: Outlet number

-
- Note:** 1. Each command string can be separated with a space.
2. The **Return String** command string can be skipped and **format** will be used by default.
-

Read Environmental Value

The Read Environmental Value command allows you to view measurements from the eco PDU's environmental sensors.

The formula for Read Environmental Value commands is as follows:

Command + Sensor + Number + Return String + [Enter]

1. For example, if you want to read environmental sensor 02 with a simple return string, type the following:

```
read sensor o02 simple [Enter]
```

2. For example, if you want to read environmental sensor 01 with a format return sting, type the following:

```
read sensor o01 format [Enter]
```

The following tables show the possible values for the Read Environmental Value commands:

Command	Description
read sensor	Read environmental value command

Sensor	Description
o	Environmental sensor command
xx	Sensor number xx: Environmental sensor on PDU (01-04) Example: o02

Return String	Description
simple	Return simple string measurement
format	Return format string measurement

The following table lists the available Read Environmental Value commands:

Command	Sensor	Return String	Enter	Description
read sensor	oXX	simple format	[Enter]	Read environmental sensor XX with return string option

- Note:**
1. Each command string can be separated with a space.
 2. The **Return String** command string can be skipped and **format** will be used by default.
-

Close Telnet Session

The Close Telnet Session command allows you to disconnect the telnet session from the eco PDU.

The formula for the Close Telnet Session command is as follows:

Command + [Enter]

1. For example, if you want to disconnect the telnet session, type the following:

quit [Enter]

The following table shows the value for the Close Telnet Session command:

Command	Description
quit	Close telnet session command

The following table lists the Close Telnet Session command:

Command	Enter	Description
quit	[Enter]	Disconnect telnet session with eco PDU

ATEN Warranty Policy

The warranty policy may vary by product category and region of purchase. For details, please visit ATEN's official website, select your purchase counties/regions and then go to the Support Center, or contact your local ATEN sales representative for further assistance.

© Copyright 2025 ATEN® International Co., Ltd.
Released: 2025-04-14

ATEN and the ATEN logo are registered trademarks of ATEN International Co., Ltd. All rights reserved. All other brand names and trademarks are the registered property of their respective owners.