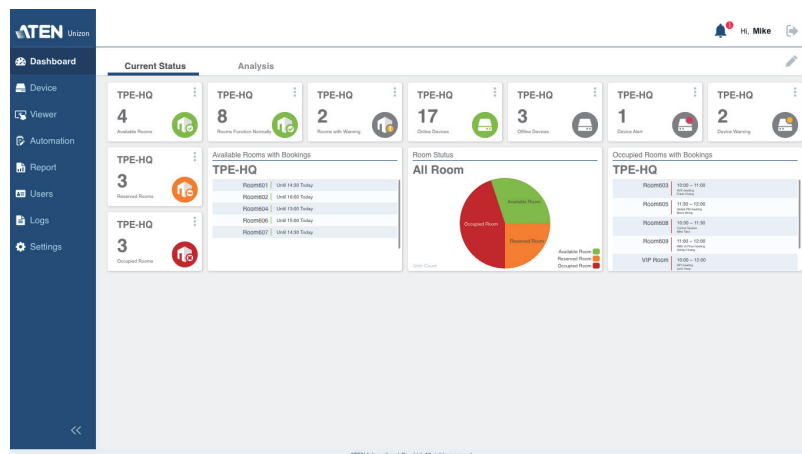


# ATEN Unizon™

## Global AV Management Platform

ATEN Unizon is a server-based software for remote centralized monitoring, control, and management of Ethernet-based ATEN Video Matrix Switches, ATEN Room Booking System, and 3rd party devices (such as projectors, lights, and AV devices) connected to ATEN Control System Controllers. By providing real-time access to device status, the platform streamlines daily AV/IT management, troubleshooting, analytics, and automation, making it the perfect solution to manage mass device deployments.

When working with ATEN Room Booking System, ATEN Unizon Timetable enables calendar syncing in real-time with RBS panels, allowing users to create / upload events on ATEN Unizon. Meanwhile, users can send requests through RBS Panels to ATEN Unizon for cleaning / catering / repair / replacement or report any issue occurs to the in-room equipment. Notifications of requests are trackable on the Unizon for effective resource allocation and timely issue resolution. Besides, user profiles are manageable via the RBS Panel-connected VK401, enabling ATEN Unizon to restrict access rights only to the authorized person. Integration with ATEN VK control system facilitates room automation solutions.



## Features

- Centralized device monitoring, control, and management
  - ATEN Video Matrix Switches, Room Booking System, Control System solutions, including the managed third-party devices
  - Detection of device statuses, such as lamp hour of a projector and connection status for remote troubleshooting and maintenance
  - Batch device control and firmware upgrades
- Intuitive user interface for large-scale Pro AV applications, easy room monitoring and management across multiple locations
  - 5-level deployment tree
  - Supports room view and floor view
  - Configurable users access rights

- Predefined scenarios for automation and task scheduling
  - Provide meeting scenarios to choose and triggers actions from controllers
  - Automatically turn on / off lights, air-con, meeting room devices based on predefined actions
- Dashboard for current status and analytics
  - Current status info for real-time troubleshooting
  - Analytics of past usage records for future optimization
  - Preset rules for generating regular reports for optimizing device maintenance arrangement
- Requests can be sent via RBS Panels to ATEN Unizon for effective resource allocation and timely issue resolution
  - Allows on-screen request for cleaning / catering / repair / replacement or report of any issue occurs to the in-room equipment
  - Notifications of requests are sent in real-time to administrators and are trackable on the Unizon platform
- User profiles are managed in the Directory, including user name, email, pin code and card numbers etc.
- Logs device usage, notifications, and emails for abnormal events for usability analysis and future optimization
- ATEN Unizon Timetable allows for calendar syncing in real-time with RBS panels to users to create / upload multiple events at one time on ATEN Unizon
- Supports mainstream web browsers
- License of different amount of controlled devices can be purchased based on users' need

## Highlights

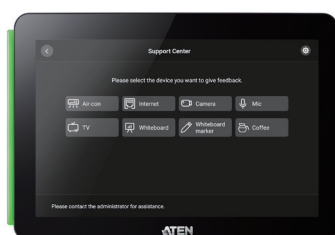
### Dashboard for Current Room and Device Status



- Monitor device conditions and instantly get alerted to potential issues for immediate troubleshooting and maintenance.
- Have real-time room status at a glance and better space arrangement from remote site.

### Request Tracking and Management

- Allows on-screen request for cleaning / catering / repair / replacement or report of any issue occurs to the in-room equipment
- Notifications of requests are sent in real-time to administrators and are trackable on the Unizon platform



Room 601 | \*HQ-6F

Search device name

#### User Requests List

Item	Person in Charge	Comment	Action
aircon	Mark	Called vendor on Dec 15, scheduled to repair on 16.	Update Close
Camera	Way	will replace it on Jan.	Update Close

#### Room Booking System

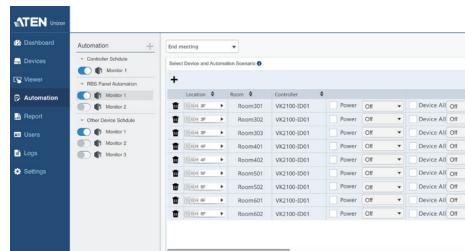
Room Name	Model	Health	Connection	Calendar Cal.	Resource Al.	IP Address	App Version	Firmware
Room 601 (7)0-6F	1000	OK	OK	OK	OK	10.146.21	2.0.102	1.11.10y

### Analytics and Customized Reports



Past usability records are organized into insightful analytics for future optimization to avoid potential failures and automatically emails of reporting rules can be set to keep users informed at all times.

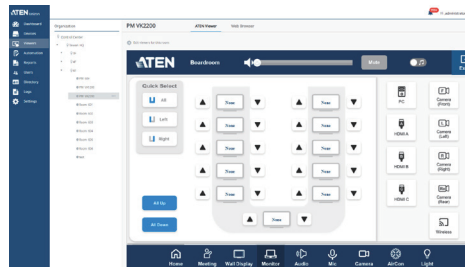
### Global Control and Automation



Location	Room	Controller	Power	CE	Device All	CE
Meeting Room	Room001	VX2100-DD1	Power	CE	Device All	CE
Meeting Room	Room002	VX2100-DD1	Power	CE	Device All	CE
Meeting Room	Room003	VX2100-DD1	Power	CE	Device All	CE
Meeting Room	Room004	VX2100-DD1	Power	CE	Device All	CE
Meeting Room	Room005	VX2100-DD1	Power	CE	Device All	CE
Meeting Room	Room006	VX2100-DD1	Power	CE	Device All	CE
Meeting Room	Room007	VX2100-DD1	Power	CE	Device All	CE
Meeting Room	Room008	VX2100-DD1	Power	CE	Device All	CE
Meeting Room	Room009	VX2100-DD1	Power	CE	Device All	CE
Meeting Room	Room010	VX2100-DD1	Power	CE	Device All	CE

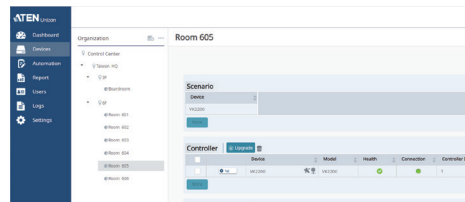
Set devices to perform routine tasks at a predefined time by scheduling or allow users to trigger devices connected to controllers to perform actions by different meeting scenarios.

### Intuitive Remote Control via Embedded Web Consoles

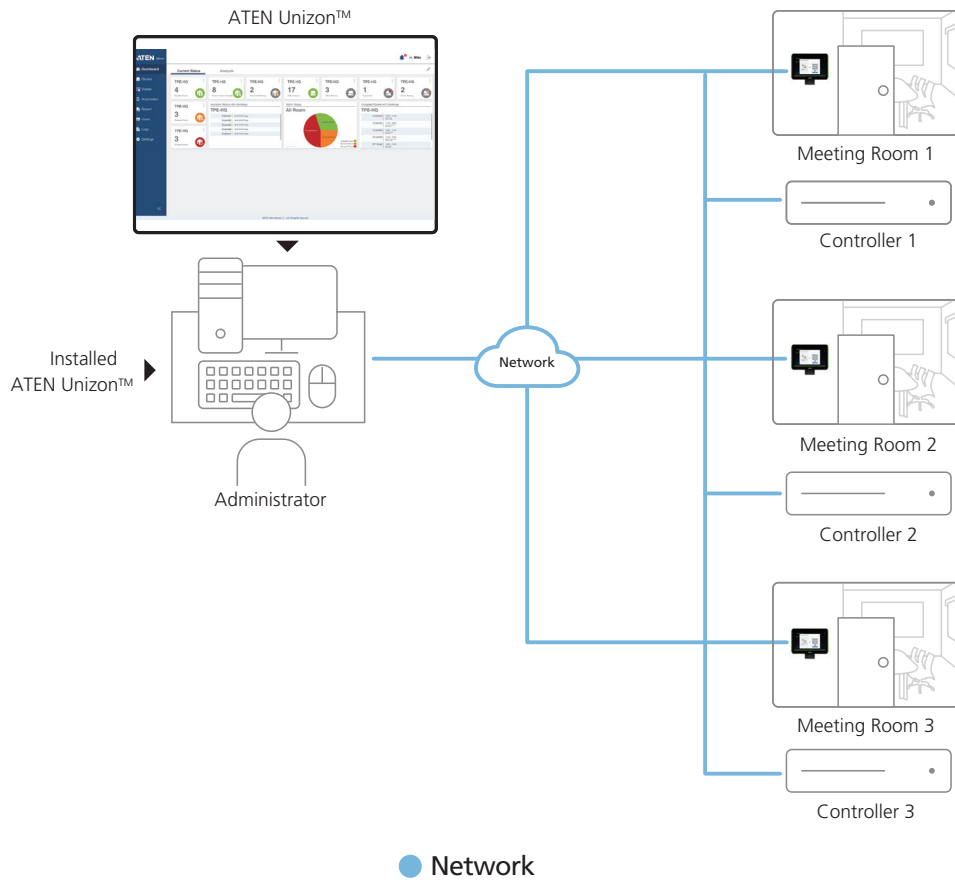


Web consoles enable remote access to room equipment, including Web Viewer from ATEN Control System family and third-party WebUI.

### Device Location Tree and User Access Permission



- Intuitive location of devices by 5-level organization tree from room, floor, building, and even by city.
- Define user roles and respective permission access levels on a room-by-room basis.



## Minimum System Requirements

	ATEN Unizon
<b>Processor</b>	3.2 GHz
<b>OS Support</b>	Windows 8 (32/64 bit) and above
<b>Storage Capacity</b>	10 GB available hard disk space
<b>System Memory</b>	8 GB
<b>Web Browser</b>	Internet Explorer v.11 or later Microsoft Edge v.79.0.309 or later Mozilla Firefox v.72.0 or later Google Chrome v.80.0 or later
<b>License</b>	
Activation	<ul style="list-style-type: none"> <li>• UNIZON-BASIC (Number of Managed Devices: 50)</li> <li>• UNIZON-STD (Number of Managed Devices: 500)</li> </ul>
Maintenance	<ul style="list-style-type: none"> <li>• UNIZON-EXT1 (Supported Upgrade Durations for 1 Year)</li> <li>• UNIZON-EXT3 (Supported Upgrade Durations for 3 Year)</li> <li>• UNIZON-EXTLIFE (Supported Upgrade Durations for Lifetime)</li> </ul>
Add-ons	<ul style="list-style-type: none"> <li>• UNIZON-DEV10 (Additional 10 Devices for Management)</li> <li>• UNIZON-TIMETABLE (Timetable Feature Add-on)</li> </ul>
<b>Note</b>	When no license is uploaded, up to 3 devices can be managed.

### ATEN International Co., Ltd.

3F., No.125, Sec. 2, Datung Rd., Sijhih District., New Taipei City 221, Taiwan  
 Phone: 886-2-8692-6789 Fax: 886-2-8692-6767  
 www.aten.com E-mail: marketing@aten.com

Product information is subject to change without prior notice.

Released: 01/2026 V7.0

© Copyright 2026 ATEN® International Co. Ltd.  
 ATEN and the ATEN logo are registered trademarks of ATEN International Co., Ltd.  
 All rights reserved. All other trademarks are the property of their respective owners.

